

Roof Top Luggage Boxes

Voyager 430

Travel Twin 460

Travel Exclusive 460

Travel Exclusive 650



Introducing a New Generation

Carfit Smart Cargo Solutions is the symbol of the carefree traveller, who wants to live the outdoors in freedom and with all comforts. The brand introduces a new range of car roof boxes ideal for storage and with elevated carrying capacity.

These are strategic and smart products with exclusive and innovative design, for people who love free time, sports, holidays and above all travelling in a comfortable and organised manner.

Carfit Smart Cargo Solutions suppliers test the roof boxes at the TÜV Centre in Helmond (Holland). All tests have been passed successfully to guarantee the construction quality, the great engineering and the resilience of the used products. All Carfit Smart Cargo Solutions products have been realised with complete respect for the environment; the used materials are all recyclables, and the production technologies are all of low environmental impact.

Carfit Luggage Pods are guaranteed to be free from manufacturing defects for a period of 5 years from date of purchase. Please retain your purchase receipt to confirm warranty coverage. This warranty does not cover impact damage or issues occurring due to incorrect fitment or over-loading.

Vehicle Attachment?

Carfit Smart Cargo Solutions conceived and realised a new kind of quick attachment system of the box to the car roof. The system allows a quick and easy assembling process; moreover it keeps the box in complete stability and safety, as proofed by tests at the TÜV Centre.

The quick attachment has been conceived with a very ergonomic and easy to use handle, and includes a practical hand gear for easier closure with its appropriate holding.

The external component, attached to the bars, has a plastic cover for several reasons: to raise the grip of the fixation, to make the box more silent and to protect the cars roof bars (excludes Voyager Pods).

The Voyager Pod uses the traditional u-bolt clamp style fitting neatly around the roof bars.

Quick Attachment Clamp System



Voyager

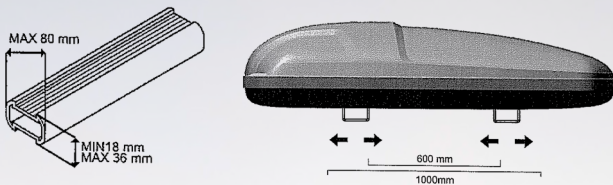
Voyager is a car roof box with an ergonomic and exclusive shape. It has been projected and conceived for a greater use of internal spaces and a lower aerodynamic impact. Voyager is a roof box suitable for all travellers with a new design, new aesthetic lines and new dimensions. Voyager is available with an embossed smooth gloss silver grey finish.



Height: 400mm
Width: 800mm
length: 1800mm
Capacity: 50kg
Volume: 430 litres

**Part Number:
46VOY430SIL**

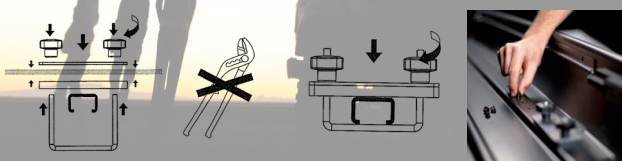
Recommended Fitting Range



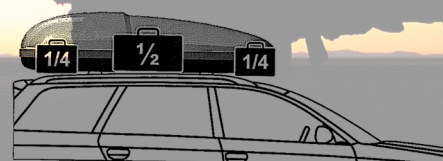
Single passenger side opening
Small gas struts ease opening and closing



U-Bolt attachment



Recommended Weight Distribution



Travel Twin

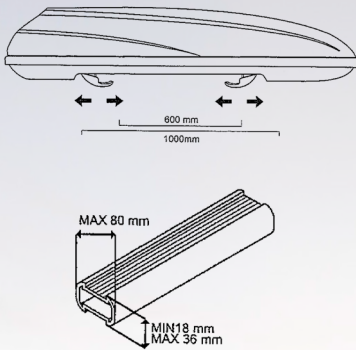
This is a car roof box with a clear and slender shape. This unique and leading-edge design reflects the modern car trends. This is ideal for those who love sports and leisure activities. Travel Twin matches with any kind of car thanks to its glowing metallic silver colour. It is equipped with a practical mechanism that allows dual side opening.



Height: 479mm
Width: 708mm
length: 1940mm
Capacity: 75kg
Volume: 460 litres

Part Number:
46TWIN460SIL

Recommended Fitting Range

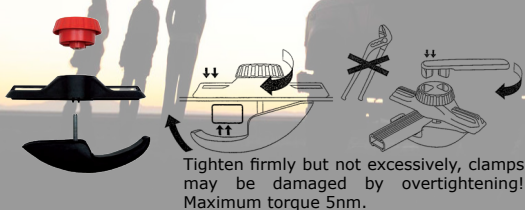


Dual Side Opening

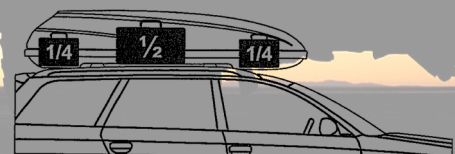
Small gas struts ease in opening and closing



Quick Attachment



Recommended Weight Distribution



Travel Exclusive

This version is conceived for the more demanding person, who care about the small but important details. In this line some useful accessories are included as standard equipment, such as the conformable handle for easier closure, fastener belt and the key ring. The mechanism that allows the dual side opening. Travel exclusive is available in two brilliant finishes: gloss black and gloss white.

Part Number:

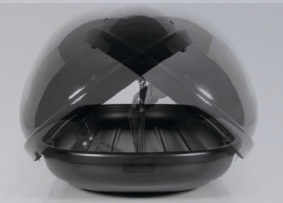
Black: 46EXCL460BLK
White: 46EXCL460WHT

460 Litre

Height: 479mm
 Width: 708mm
 length: 1940mm
 Capacity: 75kg
 Volume: 460 litres



Dual Side Opening



Small gas struts ease in opening and closing



Part Number:

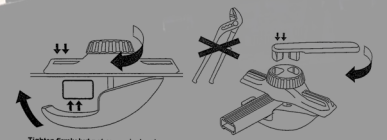
Black: 46EXCL650BLK
White: 46EXCL650WHT

650 Litre

Height: 479mm
 Width: 900mm
 length: 2350mm
 Capacity: 60kg
 Volume: 650 litres

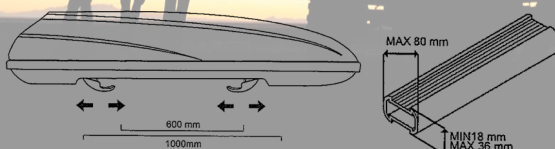


Quick Attachment



Tighten firmly but not excessively, clamps may be damaged by overtightening! Maximum torque 5nm.

Recommended Fitting Range



Recommended Weight Distribution

